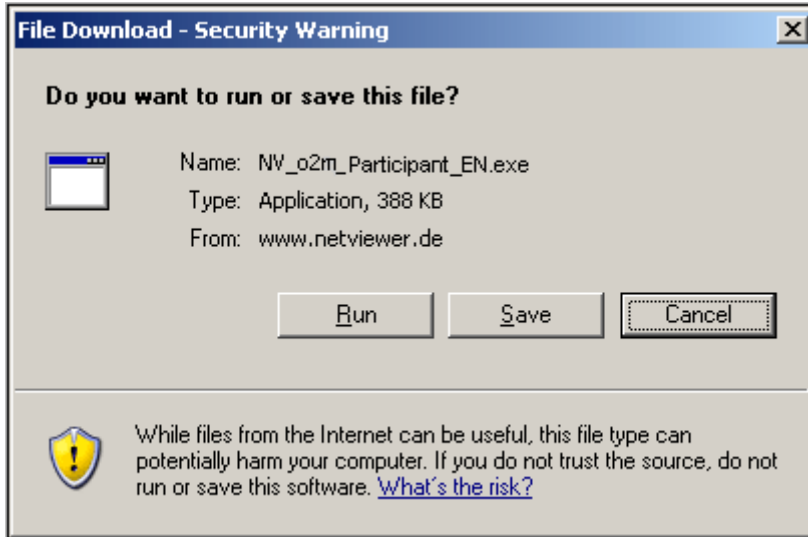


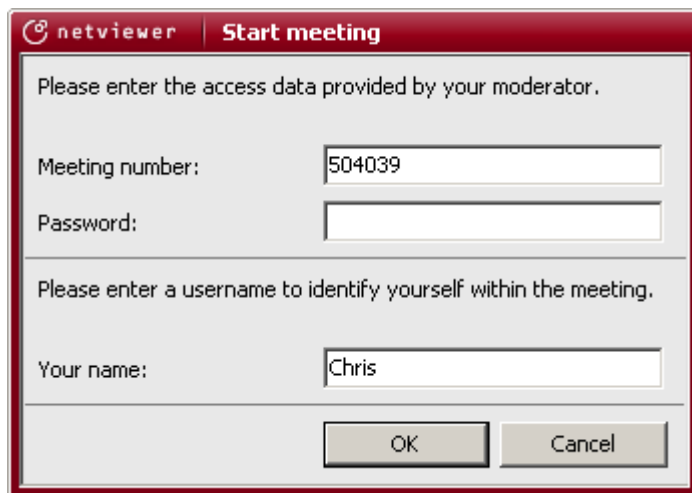
Start session

1. Start the one2meet participant program
 - from the location named by the moderator, or
 - from www.netviewer.net (Start one2meet).



Notice: If you use Internet Explorer you can start the exe file straight away. With other browsers you first have to save a local copy of the file to your computer and execute it from there.

2. In the **Start meeting** dialogue, enter the **meeting number** as communicated to you by the moderator and, if the conference is password protected, enter the conference password. You can also take this opportunity to modify the name which identifies you during the session.



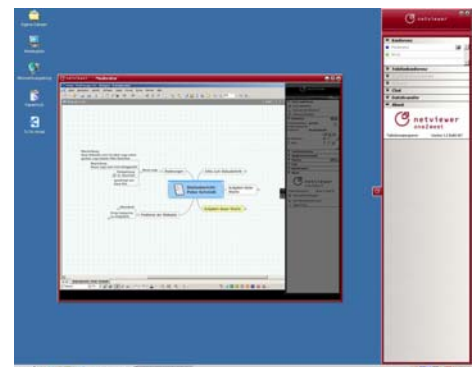
3. Click on **OK** to enter the session. The Netviewer session can begin!

In watch mode

As a participant you start in watch mode, i.e. you see a red-framed **Netviewer window** containing the content of the moderator's or another participant's screen.



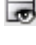

Within the Netviewer window you can either use the **pointer** (without remote control) or the moderator can hand over **remote control** to you. With remote control you have access to the approved applications, you can control the session partner's mouse cursor, and you can make file transfers by drag & drop.

On the right of the screen you can see the **clip**. Click on the clip to open the **control panel** and access the functions of Netviewer one2meet.



Functions in the Netviewer Control panel

The Control panel contains various trays that can be opened and closed. In the **Conference** tray you can see...

-  the status of screen transfer to the participants (grey/striped – incomplete/reduced colour depth).
-  whose voice and video signal is being transmitted.
-  who is in show mode—yourself, the moderator, or another participant.
-  who has received remote control over the displayed screen.

The rights for displaying one's screen, remote control and speech are granted exclusively by the moderator.

With the other trays you can...

Application selection

Define which applications and screen elements are to be displayed to the session partners while in show mode.

Monitor

Check the screen transfer to the session partners. Use the context menu (right-click on the Monitor tray) to set the transferred colour depth and thus the transfer speed and quality.

Speech (VoIP)

Activate and adjust voice transfer via Voice over IP.

Video

View the (video) picture of the session partner who is "on air".

Chat

Send text messages to all or a selection of session partners. The tray flashes when a new message has arrived.

Whiteboard

Activate the Whiteboard function so that you can jointly draw on the screen. There are different colours for each participant.

File transfer

Exchange files during the session, either with the help of the buttons or simply by drag & drop. Netviewer announces the arrival of new files by a flashing tray.

Favourites

Create links to access files quickly.

Notes

Make notes during the session.

In show mode

Before your screen is displayed to the others, you will initially be queried. Your screen content is only transferred after you have expressly agreed to this. You decide upon the content to be displayed with the Application selection.

If you have granted remote control to a session partner, you can revoke this at any time with a simple press on the **F11** key.

Exit the session

To exit a conference, click on the control panel's "Close"-button or close the Netviewer task in the Windows task bar.

Have fun Netviewing!



Notice: Depending on your product variant of Netviewer one2meet, some functions may not be available to you.